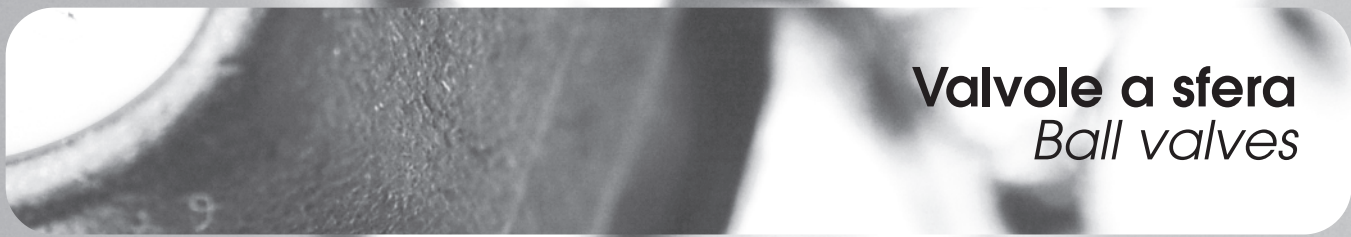


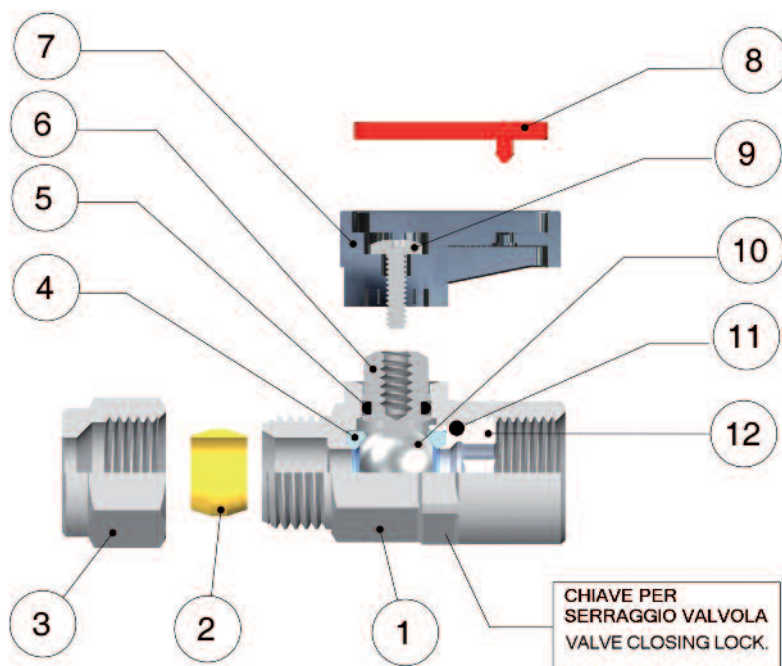


G

Serie / Series **Ghilux**



**Valvole a sfera**  
*Ball valves*


**BS EN 331:1998**
**Tested by GL to  
BS EN 331:1998**

### Scheda Materiali / Specifications

1 Corpo in Ottone cromato	1 Chrome Nickel-plated Brass Body
2 Ogiva in Ottone (PTFE a richiesta)	2 Brass Olive (if Requested PTFE)
3 Dado in Ottone cromato	3 Chrome Nickel-plated Brass Nut
4 Guarnizione sede sfera in PTFE	4 PTFE Seats
5 Guarnizione O-RING in NBR 70 (FKM a richiesta)	5 NBR 70 Seal O-RING (FKM if required)
6 Albero in Ottone cromato	6 Chrome Nickel-plated Brass Spindle
7 Maniglietta in PA66 Caricato vetro	7 PA66 Glass reinforced Handle
8 Piastrina in Resina Acetalica	8 Acetalic resin Plate
9 Vite in acciaio	9 Steel Screw
10 Sfera in Ottone cromato	10 Chrome Nickel-plated Brass Ball
11 Guarnizione O-RING in NBR 70 (FKM a richiesta)	11 NBR 70 Seal O-RING (FKM if required)
12 Ghiera o raccordo in Ottone	12 Brass Fitting

### Pressioni / Pressures

Pressione minima / Minimum Pressure: -0.99 bar (-0.099MPa)  
 Pressione massima / Maximum pressure: 20 bar (2 MPa)

### Temperature / Temperatures

Temperatura minima / Minimum temperature: -20 °C  
 Temperatura massima / Maximum temperature: +80 °C

### Filettature / Threads

Gas conica conforme ISO 7.1, BS 21, DIN 2999 / Tapered gas in conformity with ISO 7.1, BS 21, DIN 2999.  
 Gas cilindrica conforme ISO 228 Classe A / Parallel gas in conformity with ISO 228 Class A.

### Tubi di collegamento / Connection Tubes

Tubi in rame, tubi metallici in genere, raccorderia varia.  
 PA6, PA11, ecc. utilizzando l'apposita bussolina di rinforzo  
 art. 10770.

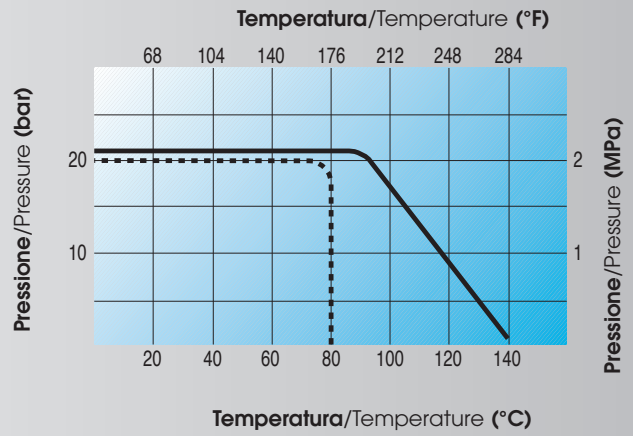
*Tubes made in copper, metal in general and various fittings.  
 PA6, PA11 etc. with an inside support bush art 10770.*

### Fluidi compatibili / Fluids

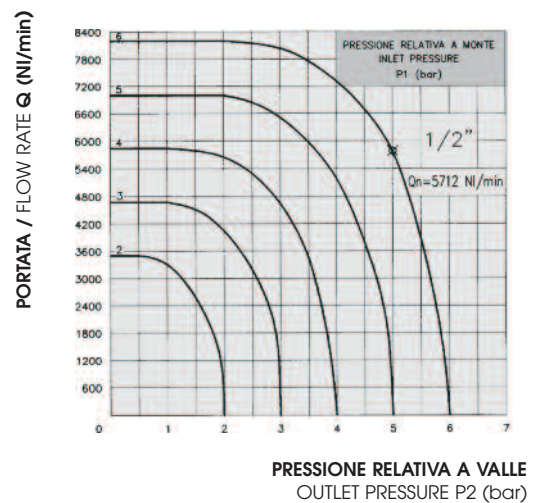
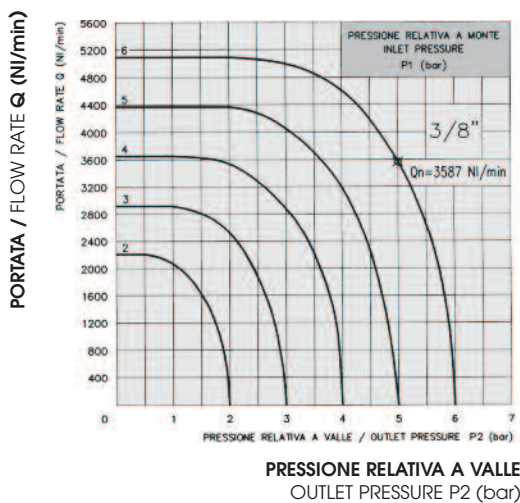
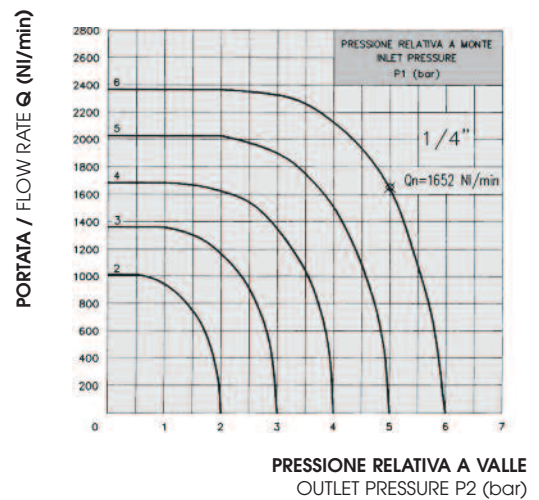
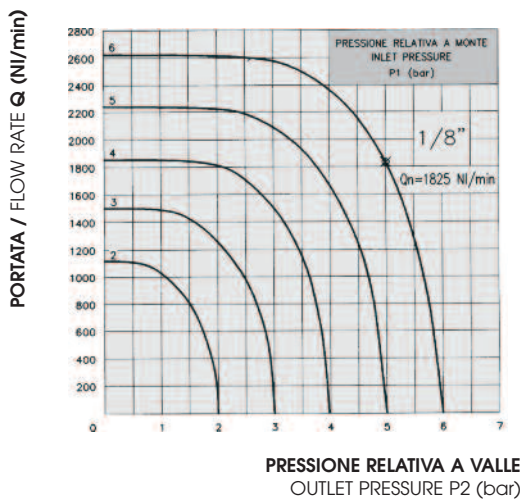
Aria compressa, acqua, oli.  
 \*1° e 2° famiglia di gas a media pressione.  
 3° famiglia di gas a bassa pressione.  
 Compressed air, water, oils.  
 \*1st and 2nd family gases at medium pressure.  
 3rd family gases at low pressure.

**DIAGRAMMA PRESSIONE-TEMPERATURA**  
PRESSURE-TEMPERATURE RATINGS DIAGRAM

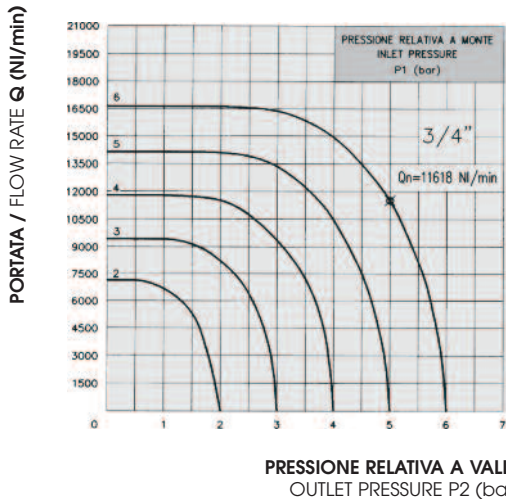
- PTFE + NBR
- PTFE + FKM



**CURVE CARATTERISTICHE DI FLUSSO PER ARIA**  
RELATIVE ALLE VALVOLE A SFERA GHILUX ART. 6400 FEMMINA-FEMMINA  
CHARACTERISTIC CURVES OF FLOW FOR AIR  
PERTINENT TO THE BALL VALVES GHILUX ART. 6400 FEMALE-FEMALE







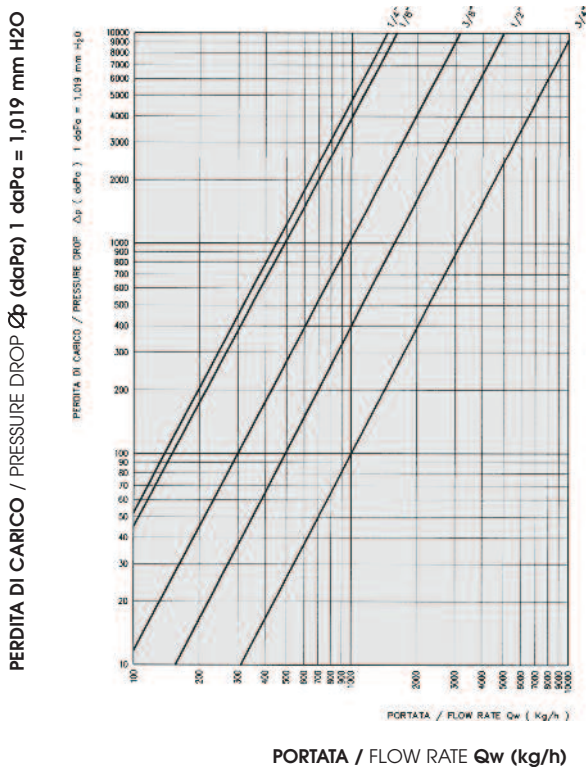
Sui vari diagrammi é evidenziato il valore di  $Q_n$  relativo ad una pressione  $P_1 = 6$  bar e ad una pressione  $P_2 = 5$  bar.

*On the different diagrams is marked the value of flow rate  $Q_n$  pertinent to a pressure  $P_1 = 6$  bar and to a pressure  $P_2 = 5$  bar.*

**CERTIFICATO DI PROVA N° 36794 RILASCIATO DALL' "ISTITUTO GIORDANO" IN DATA 13/06/1990.**

*TEST CERTIFICATE N° 36794 ISSUED BY THE "ISTITUTO GIORDANO" ON THE 13/06/1990.*

**DIAGRAMMA DELLA CARATTERISTICA PORTATA-PERDITA DI CARICO RELATIVO ALLE VALVOLE A SFERA GHILUX ART. 6400 FEMMINA-FEMMINA PER ACQUA**  
**DIAGRAM OF THE FLOW RATE AND PRESSURE DROP CHARACTERISTICS PERTINENT TO THE BALL VALVES GHILUX ART. 6400 FEMALE-FEMALE FOR WATER**



**COEFFICIENTI DI PORTATA Kv**  
**FLOW RATE FACTORS Kv**

Riportiamo in tabella il coefficiente di portata  $K_v$  delle valvole a sfera GHILUX, ricordando che tale coefficiente rappresenta la quantità d' acqua che attraversa la valvola nell'unità di tempo (Kg/h) alla temperatura di 15.5° C e che determina una caduta di pressione unitaria.

*On the following table we specify the flow rate factor  $K_v$  of the ball valves GHILUX, we remind You that this factor represent the quantity of water that cross the valve in the unit time (Kg/h) at the temperature of 15.5° C and it determines a drop of unitary pressure.*

Misura Size	Coefficiente di Portata Idraulica Factor of hydraulic flow rate $K_v$ (Kg/h)
1/8"	1614
1/4"	1461
3/8"	3164
1/2"	5051
3/4"	10274

**CERTIFICATO DI PROVA N. 36547 RILASCIATO DALL' "ISTITUTO GIORDANO" IN DATA 31/05/1990**  
**TEST CERTIFICATE N. 36547 ISSUED BY THE "ISTITUTO GIORDANO" ON THE 31/05/1990**

**COME ORDINARE**

Le valvole a sfera standard della serie GHILUX prevedono:

- Trattamento superficiale di CROMATURA
- Ogiva in OTTONE
- Maniglia CORTA
- Piastrina ROSSA

Gli articoli standard possono essere ordinati specificando solo CODICE, MISURA, QUANTITA'.

Ogni variazione allo standard deve essere specificata sull'ordine mediante una descrizione (es. Maniglia Lunga, Piastrina Verde, ecc.).

**HOW TO ORDER**

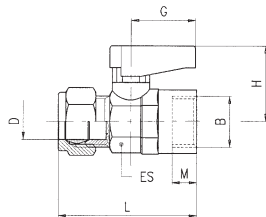
The ball valves GHILUX series are supplied with:

- Surface treatment of CHROME-NICKEL PLATED
- BRASS Olive
- SHORT Handle
- RED Plate

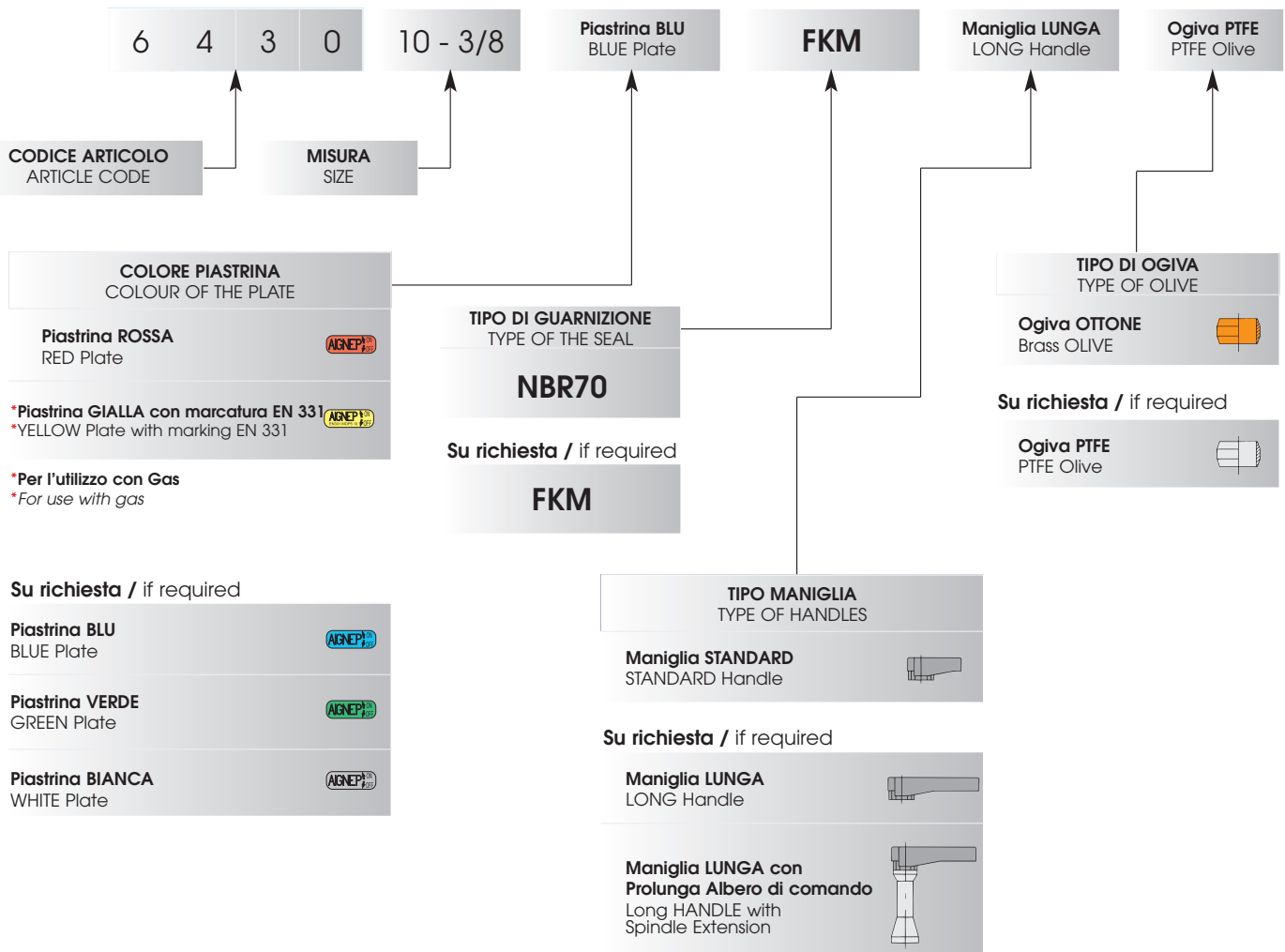
To order the standard items simply specify the ARTICLE CODE, SIZE and QUANTITY.

Every kind of changes must be specified on the order using a description (ex. LONG handle, GREEN plate, etc.).

# 6430

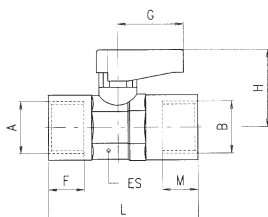
**VALVOLA TUBO - FEMMINA G ISO 228 (MANIGLIA STANDARD - PIASTRINA ROSSA)**
**TUBE - FEMALE G ISO 228 VALVE (STANDARD HANDLE - RED PLATE)**


D	B	DN	ES	M	L	G	H	Conf. Pack.
6	- 1/8	5.5	14 15	7	41	19	21	25
8	- 1/8	5.5	14-15	7	43	19	21	25
8	- 1/4	5.5	14-15	8	43	19	21	25
10	- 3/8	8	18-19	9	48	19	22	10
12	- 3/8	8	18-19	9	49	19	22	10
14	- 1/2	10	22-23	10	55.5	26	30.5	10
15	- 1/2	10	22-23	10	55.5	26	30.5	10
16	- 3/4	14	28-30	12	63.5	50	33	5
18	- 3/4	14	28-30	12	63.5	50	33	5



# 6300

**VALVOLA FEMMINA RP ISO 7 - FEMMINA RP ISO 7 (MANIGLIA STANDARD - PIASTRINA ROSSA)**  
 FEMALE RP ISO 7 - FEMALE RP ISO 7 VALVE (STANDARD HANDLE - RED PLATE)

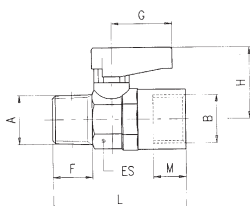


A	B	(DN)	ES	F	M	L	G	H	Conf. Pack.
1/8	- 1/8	5.5	14-15	7.4	7.4	36	19	21	25
1/4	- 1/4	5.5	14-15	11	11	43	19	21	25
3/8	- 3/8	8	18-19	11.4	11.4	47	19	22	10
1/2	- 1/2	10	22-23	15	15	59	26	30.5	10
3/4	- 3/4	14	28-30	16.3	16.3	67	50	33	5



# 6310

**VALVOLA MASCHIO CONICO R ISO 7 - FEMMINA RP ISO 7 (MANIGLIA STANDARD - PIASTRINA ROSSA)**  
 TAPER MALE R ISO 7 - FEMALE RP ISO 7 VALVE (STANDARD HANDLE - RED PLATE)

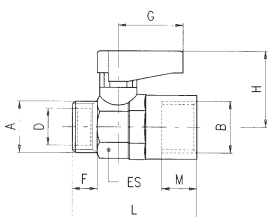


A	B	(DN)	ES	F	M	L	G	H	Conf. Pack.
1/8	- 1/8	5.5	14-15	7.4	7.4	36	19	21	25
1/4	- 1/8	5.5	14-15	11	7.4	40.5	19	21	25
1/4	- 1/4	5.5	14-15	11	11	43	19	21	25
3/8	- 3/8	8	18-19	11.4	11.4	46	19	22	10
1/2	- 1/2	10	22-23	15	15	57	26	30.5	10
3/4	- 3/4	14	28-30	16.3	16.3	63	50	33	5



# 6320

**VALVOLA MASCHIO CILINDRICO GA ISO 228 - FEMMINA RP ISO 7 (MANIGLIA STANDARD - PIASTRINA ROSSA)**  
 PARALLEL MALE GA ISO 228 - FEMALE RP ISO 7 VALVE (STANDARD HANDLE - RED PLATE)

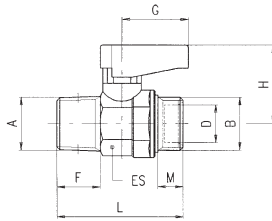


A	B	(DN)	ES	D	F	M	L	G	H	Conf. Pack.
1/8	- 1/8	5.5	14-15	6.2	7	7.4	34.5	19	21	25
1/4	- 1/8	5.5	14-15	8.2	8	7.4	35.5	19	21	25
1/4	- 1/4	5.5	14-15	8.2	8	11	38	19	21	25
3/8	- 3/8	8	18-19	10.2	9	11.4	41.5	19	22	10
1/2	- 1/2	10	22-23	15.2	10	15	50	26	30.5	10
3/4	- 3/4	14	28-30	18.2	12	16.3	56.5	50	33	5



# 6330

VAVOLA MASCHIO CONICO R ISO 7 - MASCHIO CILINDRICO GA ISO 228 (MANIGLIA STANDARD - PIASTRINA ROSSA)  
 TAPER MALE R ISO 7 - PARALLEL MALE GA ISO 228 VALVE (STANDARD HANDLE - RED PLATE)

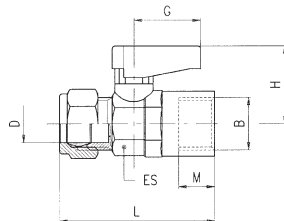


A	B	DN	ES	D	F	M	L	G	H	Conf. Pack.
1/8	- 1/8	5.5	14-15	6.2	7.4	7	33.5	19	21	25
1/8	- 1/4	5.5	14-15	8.2	7.4	8	33.5	19	21	25
1/4	- 1/8	5.5	14-15	6.2	11	7	38	19	21	25
1/4	- 1/4	5.5	14-15	8.2	11	8	38	19	21	25
3/8	- 3/8	8	18-19	10.2	11.4	9	41.5	19	22	10
1/2	- 1/2	10	22-23	15.2	15	10	49	26	30.5	10
3/4	- 3/4	14	28-30	18.2	16.3	12	55.5	50	33	5



# 6340

VALVOLA TUBO - FEMMINA RP ISO 7 (MANIGLIA STANDARD - PIASTRINA ROSSA)  
 TUBE - FEMALE RP ISO 7 VALVE (STANDARD HANDLE - RED PLATE)

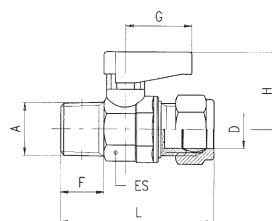


D	B	DN	ES	M	L	G	H	Conf. Pack.
6	- 1/8	5.5	14-15	7.4	41.5	19	21	25
8	- 1/8	5.5	14-15	7.4	43	19	21	25
8	- 1/4	5.5	14-15	11	46	19	21	25
10	- 3/8	8	18-19	11.4	50.5	19	22	10
12	- 3/8	8	18-19	11.4	51.5	19	22	10
14	- 1/2	10	22-23	15	61.5	26	30.5	10
15	- 1/2	10	22-23	15	61.5	26	30.5	10
16	- 3/4	14	28-30	16.3	68	50	33	5
18	- 3/4	14	28-30	16.3	68	50	33	5



# 6350

VALVOLA MASCHIO CONICO R ISO 7 - TUBO (MANIGLIA STANDARD - PIASTRINA ROSSA)  
 TAPER MALE R ISO 7 - TUBE VALVE (STANDARD HANDLE - RED PLATE)

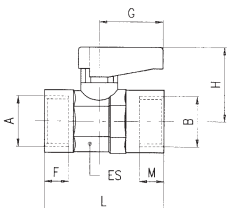


A	D	DN	ES	F	L	G	H	Conf. Pack.
1/8	- 6	5.5	14-15	7.4	40.5	19	21	25
1/8	- 8	5.5	14-15	7.4	41.5	19	21	25
1/4	- 6	5.5	14-15	11	46	19	21	25
1/4	- 8	5.5	14-15	11	45	19	21	25
3/8	- 10	8	18-19	11.4	50.5	19	22	10
3/8	- 12	8	18-19	11.4	51.5	19	22	10
1/2	- 14	10	22-23	15	59.5	26	30.5	10
1/2	- 15	10	22-23	15	59.5	26	30.5	10
3/4	- 16	14	28-30	16.3	67	50	33	5
3/4	- 18	14	28-30	16.3	67	50	33	5



# 6400

**VALVOLA FEMMINA G ISO 228 - FEMMINA G ISO 228 (MANIGLIA STANDARD - PIASTRINA ROSSA)**  
 FEMALE G ISO 228 - FEMALE G ISO 228 VALVE (STANDARD HANDLE - RED PLATE)

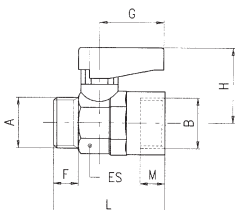


A	B	DN	ES	F	M	L	G	H	Conf. Pack.
1/8	- 1/8	5.5	14-15	7	7	35	19	21	25
1/4	- 1/4	5.5	14-15	8	8	37	19	21	25
3/8	- 3/8	8	18-19	9	9	42	19	22	10
1/2	- 1/2	10	22-23	10	10	49	26	30.5	10
3/4	- 3/4	14	28-30	12	12	58	50	33	5



# 6410

**VALVOLA MASCHIO CILINDRICO GA ISO 228 - FEMMINA G ISO 228 (MANIGLIA STANDARD - PIASTRINA ROSSA)**  
 PARALLEL MALE GA ISO 228 - FEMALE G ISO 228 VALVE (STANDARD HANDLE - RED PLATE)

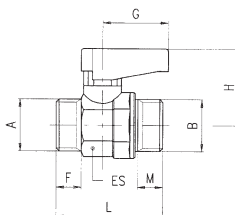


A	B	DN	ES	F	M	L	G	H	Conf. Pack.
1/8	- 1/8	5.5	14-15	7	7	34	19	21	25
1/4	- 1/8	5.5	14-15	8	7	35	19	21	25
1/4	- 1/4	5.5	14-15	8	8	35	19	21	25
3/8	- 3/8	8	18-19	9	9	39	19	22	10
1/2	- 1/2	10	22-23	10	10	45	26	30.5	10
3/4	- 3/4	14	28-30	12	12	52	50	33	5



# 6420

**VALVOLA MASCHIO CILINDRICO GA ISO 228 - MASCHIO CILINDRICO GA ISO 228 (MANIGLIA STANDARD - PIASTRINA ROSSA)**  
 PARALLEL MALE GA ISO 228 - PARALLEL MALE GA ISO 228 VALVE (STANDARD HANDLE - RED PLATE)

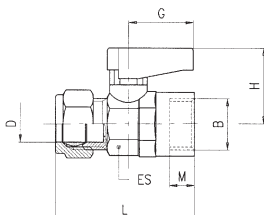


A	B	DN	ES	F	M	L	G	H	Conf. Pack.
1/8	- 1/8	5.5	14-15	7	7	32	19	21	25
1/8	- 1/4	5.5	14-15	7	8	32	19	21	25
1/4	- 1/4	5.5	14-15	8	8	33	19	21	25
3/8	- 1/4	5.5	14-15	9	8	33	19	21	25
3/8	- 3/8	8	18-19	9	9	37	19	22	10
1/2	- 3/8	8	18-19	10	9	37	19	22	10
1/2	- 1/2	10	22-23	10	10	42	26	30.5	10
3/4	- 1/2	10	22-23	12	10	42	50	30.5	10
3/4	- 3/4	14	28-30	12	12	49	50	33	5



# 6430

**VALVOLA TUBO - FEMMINA G ISO 228 (MANIGLIA STANDARD - PIASTRINA ROSSA)**  
 TUBE - FEMALE G ISO 228 VALVE (STANDARD HANDLE - RED PLATE)



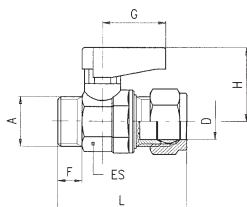
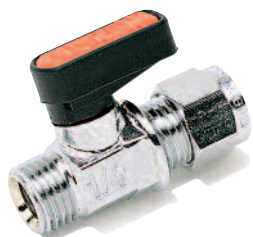
D	B	DN	ES	M	L	G	H	Conf. Pack.
6	- 1/8	5.5	14-15	7	41	19	21	25
8	- 1/8	5.5	14-15	7	43	19	21	25
8	- 1/4	5.5	14-15	8	43	19	21	25
10	- 3/8	8	18-19	9	48	19	22	10
12	- 3/8	8	18-19	9	49	19	22	10
14	- 1/2	10	22-23	10	55.5	26	30.5	10
15	- 1/2	10	22-23	10	55.5	26	30.5	10
16	- 3/4	14	28-30	12	63.5	50	33	5
18	- 3/4	14	28-30	12	63.5	50	33	5





# 6440

VALVOLA MASCHIO CILINDRICO GA ISO 228 - TUBO (MANIGLIA STANDARD - PIASTRINA ROSSA)  
 PARALLEL MALE GA ISO 228 - TUBE VALVE (STANDARD HANDLE - RED PLATE)



A	D	DN	ES	F	L	G	H	Conf. Pack.
1/8	- 6	5.5	14-15	7	39	19	21	25
1/8	- 8	5.5	14-15	7	40	19	21	25
1/4	- 6	5.5	14-15	8	40	19	21	25
1/4	- 8	5.5	14-15	8	41	19	21	25
1/4	- 10	5.5	14-15	8	44	19	21	25
3/8	- 8	5.5	14-15	9	43	19	21	25
3/8	- 10	8	18-19	9	46	19	22	10
3/8	- 12	8	18-19	9	47	19	22	10
3/8	- 14	8	18-19	9	50.5	19	22	10
3/8	- 15	8	18-19	9	50.5	19	22	10
1/2	- 10	8	18-19	10	49	19	22	10
1/2	- 12	8	18-19	10	50	19	22	10
1/2	- 14	10	22-23	10	52.5	26	30.5	10
1/2	- 15	10	22-23	10	52.5	26	30.5	10
3/4	- 14	10	22-23	12	56.5	26	30.5	10
3/4	- 15	10	22-23	12	56.5	26	30.5	10
3/4	- 16	14	28-30	12	60.5	50	33	5
3/4	- 18	14	28-30	12	60.5	50	33	5

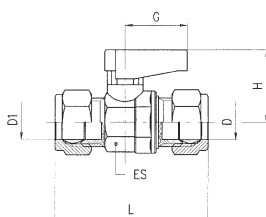
• Nelle misure 1/4-8, 1/4-10, 3/8-14, 3/8-15 il dado, il bicono e il filetto A sono all'opposto della figura.

• In the sizes 1/4-8, 1/4-10, 3/8-14, 3/8-15 the nut, the double cone and the thread A are at the opposite side of the picture.



# 6450

VALVOLA TUBO - TUBO (MANIGLIA STANDARD - PIASTRINA ROSSA)  
 TUBE - TUBE VALVE (STANDARD HANDLE - RED PLATE)

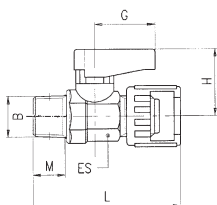


D1	D	DN	ES	L	G	H	Conf. Pack.
6	- 6	5.5	14-15	46	19	21	25
6	- 8	5.5	14-15	48	19	21	25
8	- 8	5.5	14-15	48	19	21	25
10	- 8	5.5	14-15	51	19	21	25
10	- 10	8	18-19	55	19	22	10
10	- 12	8	18-19	56	19	22	10
12	- 12	8	18-19	57	19	22	10
14	- 10	8	18-19	59.5	19	22	10
14	- 12	8	18-19	60.5	19	22	10
15	- 10	8	18-19	59.5	19	22	10
15	- 12	8	18-19	60.5	19	22	10
14	- 14	10	22-23	63	26	30.5	10
15	- 14	10	22-23	63	26	30.5	10
15	- 15	10	22-23	63	26	30.5	10
16	- 14	10	22-23	68	26	30.5	10
16	- 15	10	22-23	68	26	30.5	10
18	- 14	10	22-23	68	26	30.5	10
18	- 15	10	22-23	68	26	30.5	10
18	- 16	14	28-30	71	50	33	5
18	- 18	14	28-30	71	50	33	5



# 6460

VALVOLE DADO CAPETTATO - MASCHIO CONICO R ISO 7 (MANIGLIA STANDARD - PIASTRINA ROSSA)  
MILLED NUT - TAPER MALE R ISO 7 VALVE (STANDARD HANDLE - RED PLATE)



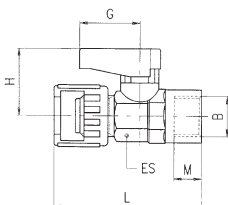
B	DN	ES	M	L	G	H	Conf. Pack.
1/8	5.5	14-15	7.4	44	19	21	10
1/4	5.5	14-15	11	49.5	19	21	10
3/8	8	18-19	11.4	50	19	21	10



**NO GAS**

# 6470

VALVOLE DADO CAPETTATO - FEMMINA G ISO 228 (MANIGLIA STANDARD - PIASTRINA ROSSA)  
MILLED NUT - FEMALE G ISO 228 VALVE (STANDARD HANDLE - RED PLATE)



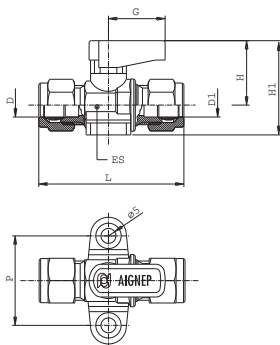
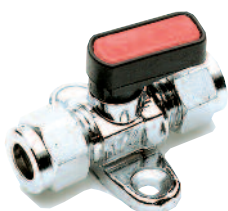
B	DN	ES	M	L	G	H	Conf. Pack.
1/8	5.5	14-15	7	46	19	21	10
1/4	5.5	14-15	8	46	19	21	10



**NO GAS**

# 6500

VALVOLA CON PIEDINI D'ANCORAGGIO TUBO-TUBO (MANIGLIA STANDARD - PIASTRINA ROSSA)  
FOOT MOUNTED TUBE-TUBE VALVE (STANDARD HANDLE - RED PLATE)

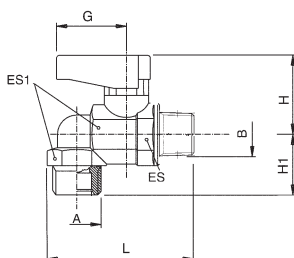


D	D1	DN	ES	L	H	H1	G	P	Conf. Pack.	
8	-	8	5.5	14-15	50	21	32	19	30	10



# 6540

VALVOLA A L MASCHIO CILINDRICO GA ISO 228-MASCHIO CONICO R ISO 7 (MANIGLIA STANDARD - PIASTRINA ROSSA)  
ELBOW PARALLEL MALE GA ISO 228-TAPER MALE R ISO 7 VALVE (STANDARD HANDLE - RED PLATE)

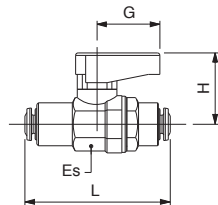


A	B	DN	ES	ES1	L	H	H1	G	Conf. Pack.	
1/4	-	1/4	5.5	14-15	17	48	21	17	19	10



# 6560

**VALVOLA CON ATTACCHI TUBO AUTOMATICI (MANIGLIA STANDARD - PIASTRINA ROSSA)**  
 WITH PUSH-IN CONNECTIONS VALVE (STANDARD HANDLE - RED PLATE)

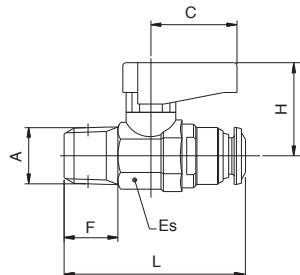


Tubo Tube	Tubo Tube	DN	ES	L	G	H	Conf. Pack.	
4	-	4	3	14-15	44	19	21	10
6	-	6	5	14-15	48	19	21	10
8	-	8	5.5	14-15	48	19	21	10
10	-	10	8	18-19	58.5	19	22	10
12	-	12	10	22-23	66	26	30.5	10

**NO GAS**

# 6570

**VALVOLA MASCHIO CONICO R ISO 7 - ATTACCO TUBO AUTOMATICO (MANIGLIA STANDARD - PIASTRINA ROSSA)**  
 TAPER MALE R ISO 7 - PUSH-FIT CONNECTIONS VALVE (STANDARD HANDLE - RED PLATE)

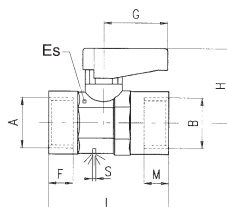


A	Tubo Tube	F	Es	L	C	H	Conf. Pack.	
1/8	-	4	8.5	14-15	35	19	21	10
1/8	-	6	8.5	14-15	40	19	21	10
1/8	-	8	8.5	14-15	41.5	19	21	10
1/4	-	6	12.5	14-15	38.5	19	21	10
1/4	-	8	12.5	14-15	45.5	19	22	10

**NO GAS**

# 6600

**VALVOLA CON FORO DI SFIATO FEMMINA G ISO 228 (MANIGLIA STANDARD - PIASTRINA ROSSA)**  
 EXHAUST HOLE FEMALE G ISO 228 - FEMALE G ISO 228 VALVE (STANDARD HANDLE - RED PLATE)

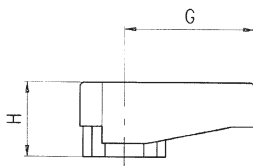


A	B	DN	ES	F	M	L	G	H	S	Conf. Pack.	
1/8	-	1/8	5.5	14-15	7	7	35	19	21	2.5	10
1/4	-	1/4	5.5	14-15	8	8	37	19	21	2.5	10
3/8	-	3/8	8	18-19	9	9	42	19	22	3	10

**NO GAS**

# 6900

MANIGLIA STANDARD - STANDARD HANDLE



Modello Type	G	H	Conf. Pack.
<b>A</b>	19	11	25
<b>B</b>	26	15	25

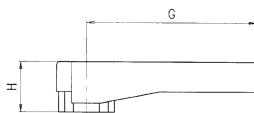
**A = Per valvole da 1/8, 1/4, 3/8.**  
A = For valves of 1/8, 1/4, 3/8.

**B = Per valvole da 1/2, 3/4.**  
B = For valves of 1/2, 3/4.



# 6910

MANIGLIA LUNGA - LONG HANDLE



Modello Type	G	H	Conf. Pack.
<b>A</b>	35	11	25
<b>B</b>	50	15	25

**A = Per valvole da 1/8, 1/4, 3/8.**  
A = For valves of 1/8, 1/4, 3/8.

**B = Per valvole da 1/2, 3/4.**  
B = For valves of 1/2, 3/4.





## Prolunga albero di comando / Spindle Extension

Tutti i modelli di valvola a sfera di questa serie possono essere forniti con asta di manovra prolungata (vedi figura). Per l'ordinazione vedi le istruzioni nella pagina "COME ORDINARE" posta all'inizio della serie.

All the valves "GHILUX" can be supplied with a spindle extension (see the picture). To order use the same instructions mentioned in the previous page "HOW TO ORDER".



### 6915

**PROLUNGA ALBERO DI COMANDO (CON MANIGLIA LUNGA, VITE)**  
**SPINDLE EXTENSION (WITH LONG HANDLE, SCREW)**



Modello Type	Misura valvola Valve size	L	Conf. Pack.
A	1/8	58	50
	1/4	58	
	3/8	59	
B	1/2	68	25
	3/4	70	



### 6920

**PIASTRINA COLORATA**  
**COLOURED PLATE**



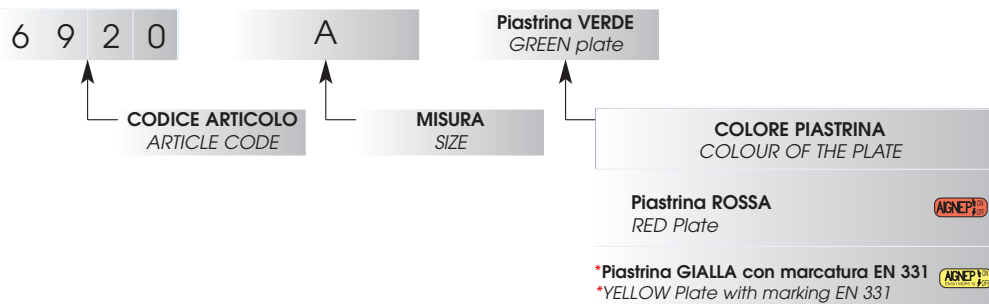
Modello Type	Conf. Pack.
A	100
B	100

A = Per valvole da 1/8, 1/4, 3/8.  
 A = For valves of 1/8, 1/4, 3/8.

B = Per valvole da 1/2, 3/4.  
 B = For valves of 1/2, 3/4.



ESEMPIO D'ORDINE - EXAMPLE OF ORDER



Su richiesta / if required

Piastrina BLU  
 BLUE Plate



Piastrina VERDE  
 GREEN Plate



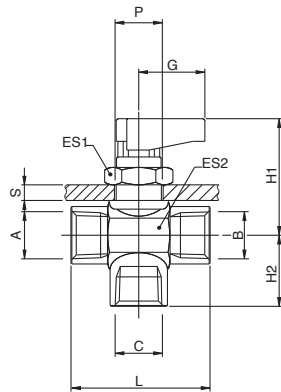
Piastrina BIANCA  
 WHITE Plate



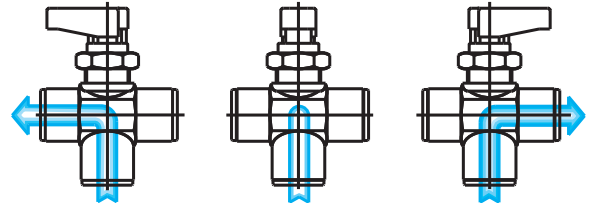
\*Per l'utilizzo con Gas  
 \*For use with gas

# 6700

VALVOLA A TRE VIE FEMMINA G ISO 228 (MANIGLIA STANDARD - PIASTRINA ROSSA)  
3 WAYS FEMALE G ISO 228 VALVE (STANDARD HANDLE - RED PLATE)

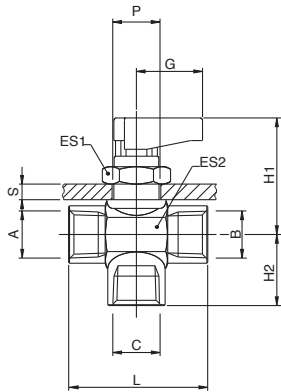


A	B	C	(DN)	ES1	ES2	L	G	H1	H2	SMax	P	Conf. Pack.
1/8-1/8-1/8	5	17	17	35	19	33.5	15.5	4.5	14.5	25		
1/4-1/4-1/4	5	17	17	37	19	33.5	17.5	4.5	14.5	25		
3/8-3/8-3/8	7	17	21	42	19	35	19.5	4.5	14.5	10		

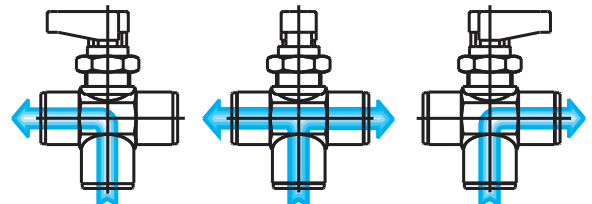


# 6710

VALVOLA A TRE VIE FEMMINA G ISO 228 (MANIGLIA STANDARD - PIASTRINA ROSSA)  
3 WAYS FEMALE G ISO 228 VALVE (STANDARD HANDLE - RED PLATE)

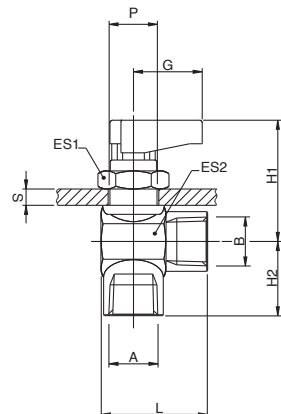


A	B	C	(DN)	ES1	ES2	L	G	H1	H2	SMax	P	Conf. Pack.
1/8-1/8-1/8	5	17	17	35	19	33.5	15.5	4.5	14.5	25		
1/4-1/4-1/4	5	17	17	37	19	33.5	17.5	4.5	14.5	25		
3/8-3/8-3/8	7	17	21	42	19	35	19.5	4.5	14.5	10		

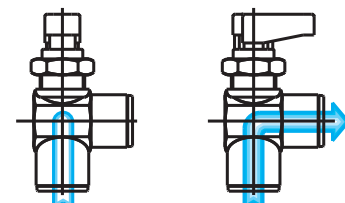


# 6720

VALVOLA A "L" FEMMINA G ISO 228 (MANIGLIA STANDARD - PIASTRINA ROSSA)  
"L" VALVE FEMALE G ISO 228 VALVE (STANDARD HANDLE - RED PLATE)

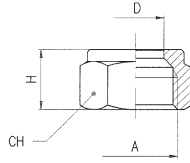
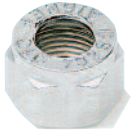


A	B	(DN)	ES1	ES2	L	G	H1	H2	SMax	P	Conf. Pack.
1/8-1/8	5	17	17	28.5	19	33.5	15.5	4.5	14.5	25	
1/4-1/4	5	17	17	28.5	19	33.5	17.5	4.5	14.5	25	
3/8-3/8	7	17	21	31	19	35	19.5	4.5	14.5	10	



# 6680

DADO - NUT

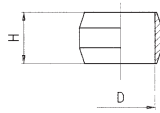


D	A	H	CH	Conf. Pack.
6	- 1/8	11	12	100
8	- 1/4	12	15	100
10	- 3/8	13	19	100
12	- 3/8	14	19	100
14	- 1/2	15	24	100
15	- 1/2	15	24	100
16	- 3/4	17	30	100
18	- 3/4	17	30	100



# 10740

OGIVA OTTONE - BRASS OLIVE

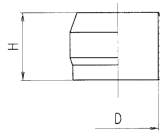


D	H	Conf. Pack.
6	6.5	50
8	6.5	50
10	7.5	50
12	8	50
15	9	25
18	10	25



# 10741

OGIVA OTTONE - BRASS OLIVE

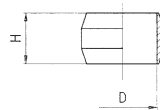


D	H	Conf. Pack.
14	12	50
16	13.5	50



# 10760

OGIVA PTFE - PTFE OLIVE

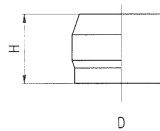


D	H	Conf. Pack.
6	6.5	50
8	6.5	50
10	7.5	50
12	8	50
15	9	50
18	10	50



# 10761

OGIVA PTFE - PTFE OLIVE



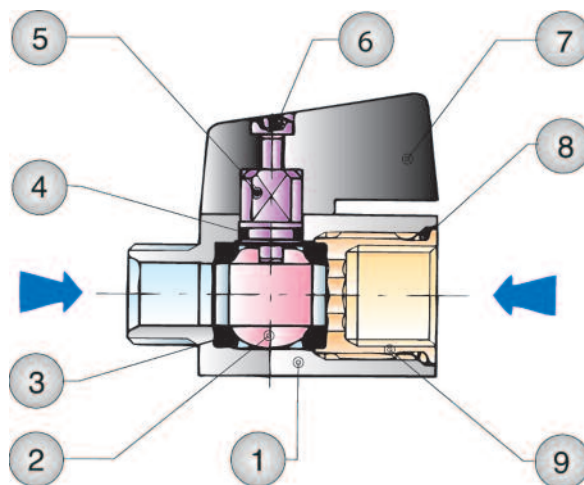
D	H	Conf. Pack.
14	12	50
16	13.5	50



### Mini Valvole a Sfera / Mini Ball Valves

Le mini valvole a sfera Art. 6065 e Art. 6066 sono valvole di intercettazione del tipo ON-OFF. L'apertura e la chiusura della valvola avvengono manualmente agendo sull'alberino di comando della sfera con l'apposita maniglietta o mediante una chiave.

The mini ball valves Art. 6065 and Art. 6066 are shutoff valves type ON-OFF. The opening and closing functions are made by hand, acting on the control spindle of the ball with the handle, or operated with a spanner.



### Scheda Materiali / Specifications

- 1 Corpo in Ottone nichelato
- 2 Sfera in Ottone nichelato
- 3 Guarnizione sede sfera in PTFE
- 4 Guarnizione O-RING in NBR 70
- 5 Albero in Ottone nichelato
- 6 Vite in acciaio
- 7 Maniglietta in PA66 Caricato vetro
- 8 Guarnizione O-RING in NBR 70
- 9 Ghiera o raccordo in Ottone nichelato

- 1 Nickel-plated Brass Body
- 2 Nickel-plated Brass Ball
- 3 PTFE Seats
- 4 NBR 70 Seal O-RING
- 5 Nickel-plated Brass Spindle
- 6 Steel Screw
- 7 PA66 Glass reinforced Handle
- 8 NBR 70 Seal O-RING
- 9 Nickel-plated Brass Fitting

### Pressioni / Pressures

Pressione minima / Minimum Pressure: -0.99 bar (-0.099MPa)  
 Pressione massima / Maximum pressure: 10 bar (1 MPa)

### Temperature / Temperatures

Temperatura minima / Minimum temperature: -25 °C  
 Temperatura massima / Maximum temperature: +90 °C

### Filettature / Threads

Gas cilindrica conforme ISO 228 Classe A / Parallel gas in conformity with ISO 228 Class A.

### Tubi di collegamento / Connection Tubes

Tubi metallici in genere,  
 raccorderia varia.

Tubes made in metal in general  
 and various fittings.

### Fluidi compatibili / Fluids

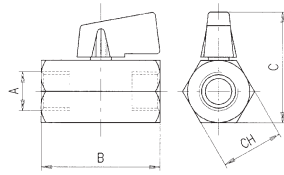
Aria compressa, acqua,  
 vari oli, ecc.

Vuoto.  
 Compressed air, water,  
 various types of oils, etc.  
 Vacuum.



# 6065

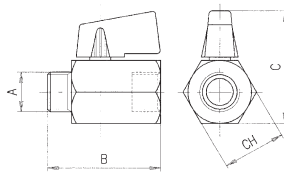
VALVOLA A SFERA MINI FEMMINA G ISO 228 - FEMMINA G ISO 228 - MINI BALL VALVE FEMALE G ISO 228 - FEMALE G ISO 228



A	DN	B	C	CH	Conf. Pack.
1/8	6	39	38	21	10
1/4	8	40	38	21	10
3/8	8	42	38	21	10
1/2	10	48	42	25	10
3/4	12	54	47	30	10

# 6066

VALVOLA A SFERA MINI MASCHIO G ISO 228 - FEMMINA G ISO 228 - MINI BALL VALVE MALE GA ISO 228 - FEMALE G ISO 228

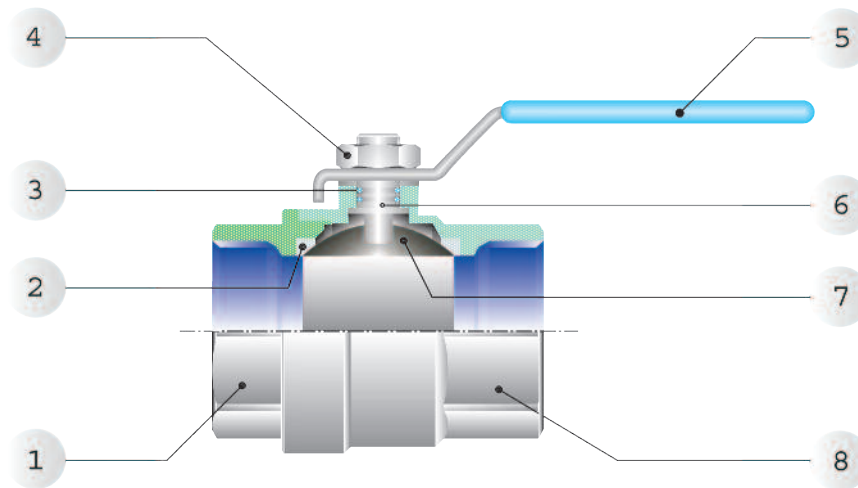


A	DN	B	C	CH	Conf. Pack.
1/8	6	39	38	21	10
1/4	8	39	38	21	10
3/8	8	40	38	21	10
1/2	10	46	42	25	10
3/4	12	51	47	30	10

### Valvole a Sfera / Ball Valves

Le valvole a sfera a passaggio totale sono valvole di intercettazione del tipo ON-OFF, adatte a grandi portate. L'apertura e la chiusura avvengono manualmente agendo sull'alberino di comando della sfera con l'apposita maniglia o mediante una chiave.

The ball valves full port are shutoff valves type ON-OFF, suitable for high flow rate. The opening and closing functions are made by hand, acting on the control spindle of the ball with the handle, or operated with a spanner.

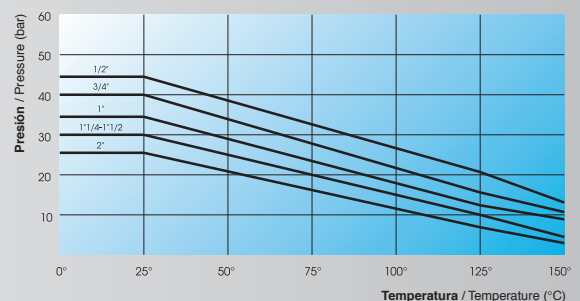


### Scheda Materiali / Specifications

- 1 Raccordo in Ottone Nichelato
- 2 Guarnizione sede sfera in PTFE
- 3 Guarnizione asta in NBR
- 4 Dado per leva in Acciaio
- 5 Leva di manovra in acciaio plastificato
- 6 Asta di manovra in ottone nichelato
- 7 Sfera in ottone cromato
- 8 Corpo in ottone nichelato

- 1 Nickel-plated Brass Fitting
- 2 PTFE Seats
- 3 NBR Stem Seal
- 4 Steel Nut for lever
- 5 Steel plastified Lever handle
- 6 Nickel-plated Brass Stem
- 7 Chrome Nickel-plated Brass Ball
- 8 Nickel-plated Brass Body

#### \*\*DIAGRAMMA PRESSIONE-TEMPERATURA PRESSURE-TEMPERATURE RATINGS DIAGRAM



Filettature / Thread

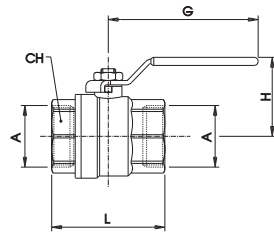
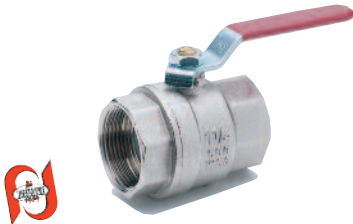
**Gas Cilindrica conforme ISO 228 classe A.**  
Parallel gas in conformity with ISO 228 class A.

Tubi di collegamento / Connections tube

**Tubi metallici in genere, raccorderia varia.**  
Tubes made in metal in general and various fittings.

# 6067

VALVOLA A SFERA, FEMMINA G ISO 228 - FEMMINA G ISO 228 - BALL VALVE, FEMALE G ISO 228 - FEMALE G ISO 228



A	DN	CH	L	G	H	Conf. Pack.
1/2	15	25	46	75	47.5	10
3/4	20	31	56.5	75	51	10
1"	25	38	65.5	110	63	5
1"1/4	32	48	77	110	68.5	2
1"1/2	40	54	88.5	140	84.5	1
2"	50	67	101.5	140	92.5	1

**ART.6067:**

Fluidi: Aria compressa, acqua, olii.

**Fino al DN20: Valgono le condizioni riportate nel diagramma Pag. 9.18\*\***

Dal DN25 al DN50, Pressione Max: 18 bar

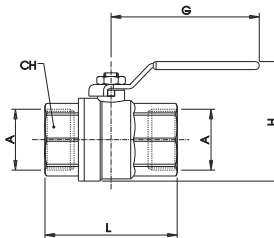
Fluid: Compressed air, water, oil.

DN 15 and 20: Use Diagram condition Pag. 9.18\*\*

From DN25 to DN50, Max Pressure: 18 bar

# 6068

VALVOLA A SFERA PER GAS, FEMMINA RP ISO7 - FEMMINA RP ISO7 - GAS BALL VALVE, FEMALE RP ISO7 - FEMALE RP ISO7



A	DN	CH	L	G	H	Conf. Pack.
1/2	15	26	59	88	58	10
3/4	20	32	67.3	88	65	10
1"	25	40	77.5	90	74	5
1"1/4	32	49	92	90	85	2
1"1/2	40	55	101.5	134	100	1
2"	50	68	122.5	134	116.5	1

**ART.6068:**

Dal DN15 al DN50:

Fluidi: 1° e 2° Famiglia di gas a media pressione e 3° famiglia di gas a bassa pressione.

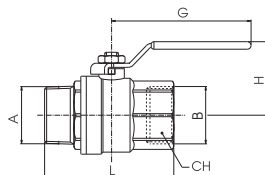
OMOLOGATE EN 331 fino a pressione Max: 5 bar

From DN 15 to 50:

 Fluids: 1<sup>st</sup> and 2<sup>nd</sup> gas family to medium pressure and 3<sup>th</sup> gas family to low pressure OMOLOGATED EN331 to Max pressure: 5bar

# 6069

VALVOLA A SFERA MASCHIO G ISO 228 - FEMMINA G ISO 228 - BALL VALVE MALE GA ISO 228 - FEMALE G ISO 228



A	B	DN	CH	L	G	H	Conf. Pack.
1/2	- 1/2	15	25	56	75	47.5	10
3/4	- 3/4	20	31	63.5	75	51	10
1"	- 1"	25	38	74	110	63	5
1"1/4	- 1"1/4	32	48	85	110	68.5	2
1"1/2	- 1"1/2	40	54	100	140	84.5	1
2"	- 2"	50	67	121.5	140	92.5	1

**ART.6069:**

Fluidi: Aria compressa, acqua, olii.

**Fino al DN20: Valgono le condizioni riportate nel diagramma Pag. 9.18\*\***

Dal DN25 al DN50, Pressione Max: 18 bar

Fluid: Compressed air, water, oil.

DN 15 and 20: Use Diagram condition Pag. 9.18\*\*

From DN25 to DN50, Max Pressure: 18 bar

### Scheda Materiali / Specifications

Corpo in ottone dal 1/4 al 2"  
 Corpo in bronzo dal 2"1/2 al 4"  
 Tappo in ottone  
 Filtro in acciaio AISI 304  
 Guarnizione corpo in NBR

Brass body from 1/4 to 2"  
 Bronze body from 2"1/2 to 4"  
 Brass Cap  
 Steel AISI 304 Strainer  
 NBR Body Seal

### Pressioni / Pressures

Pressioni alle temperature di riferimento :  
 Pressures to reference temperature:

18 BAR	80°C
16 BAR	100°C
10 BAR	120°C

### Temperatura di esercizio Working temperature

Da -20°C a +110°C in assenza di vapore.  
 From -20°C to +110°C without steam.

### Fluidi compatibili / Fluids

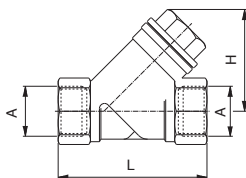
Acqua, Oli.  
 Water, Oil.

### Grado di filtrazione / Filtration degree

Da 1/4 a 2" 500 µm; 2"1/2, 3" e 4" 800 µm.  
 From 1/4 to 2" 500 µm; 2"1/2, 3" e 4" 800 µm.

# 6035

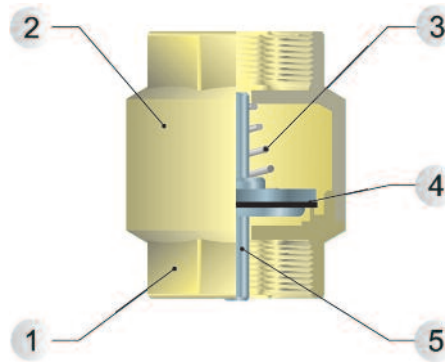
FILTRO "Y" PN 20 - "Y" FILTER PN 20



A	DN	L	H	Conf. Pack.
1/4	8	55	40	10
3/8	10	55	40	10
1/2	15	58	40	10
3/4	20	70	50	10
1"	25	87	56	5
1"1/4	32	96	64	2
1"1/2	40	106	73	2
2"	50	126	89	1
2"1/2"	65	150	107	1
3"	80	170	120	1
4"	100	219	161	1







*Scheda Materiali / Specifications*

- |                               |                          |
|-------------------------------|--------------------------|
| 1 Corpo in Ottone             | 1 Brass Body             |
| 2 Coperchio in Ottone         | 2 Brass Cover Cap        |
| 3 Molla in acciaio inox       | 3 Stainless steel Spring |
| 4 Guarnizione in NBR 65 SH/PS | 4 NBR 65 SH/PS Seal      |
| 5 Otturatore in plastica      | 5 Plastic Shutter        |

*Pressioni / Pressures*

Pressione minima / Minimum Pressure: 0.99 bar (0.099MPa)  
 Pressione massima / Maximum pressure: 15 bar (1.5 MPa)

*Temperature / Temperatures*

Temperatura minima / Minimum temperature: -20 °C  
 Temperatura massima / Maximum temperature: +110 °C

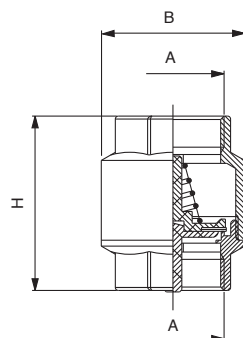
*Fluidi compatibili / Fluids*

Acqua, Aria compressa, Oli.

Water, Compressed Air, Oil.

**6036**

VALVOLA DI RITEGNO - NON RETURN VALVE

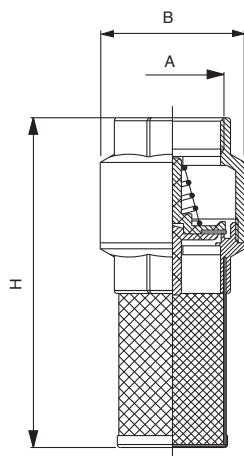


A	H	B	Conf. Pack.
1/2	49	34.5	10
3/4	53.5	42.5	5
1"	58.5	47.5	5
1"1/4	66.5	60	2
1"1/2	72	69	2
2"	77	85	1



# 6037

VALVOLA DI FONDO - FINAL VALVE

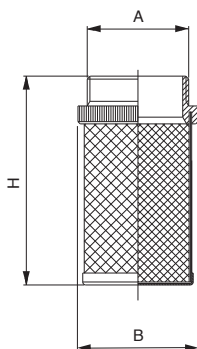


A	H	B	Conf. Pack.
1/2	91	34.5	10
3/4	100.5	42.5	5
1"	105	47.5	5
1"1/4	125	60	4
1"1/2	140	69	2
2"	160	85	1



# 6038

FILTRO IN RETE STIRATA - STRETCHED NET-FILTER



A	B	H	Conf. Pack.
1/2	26	50	10
3/4	32	57	5
1"	41	56.5	5
1"1/4	49	68	5
1"1/2	55	79	5
2"	68	95	1

